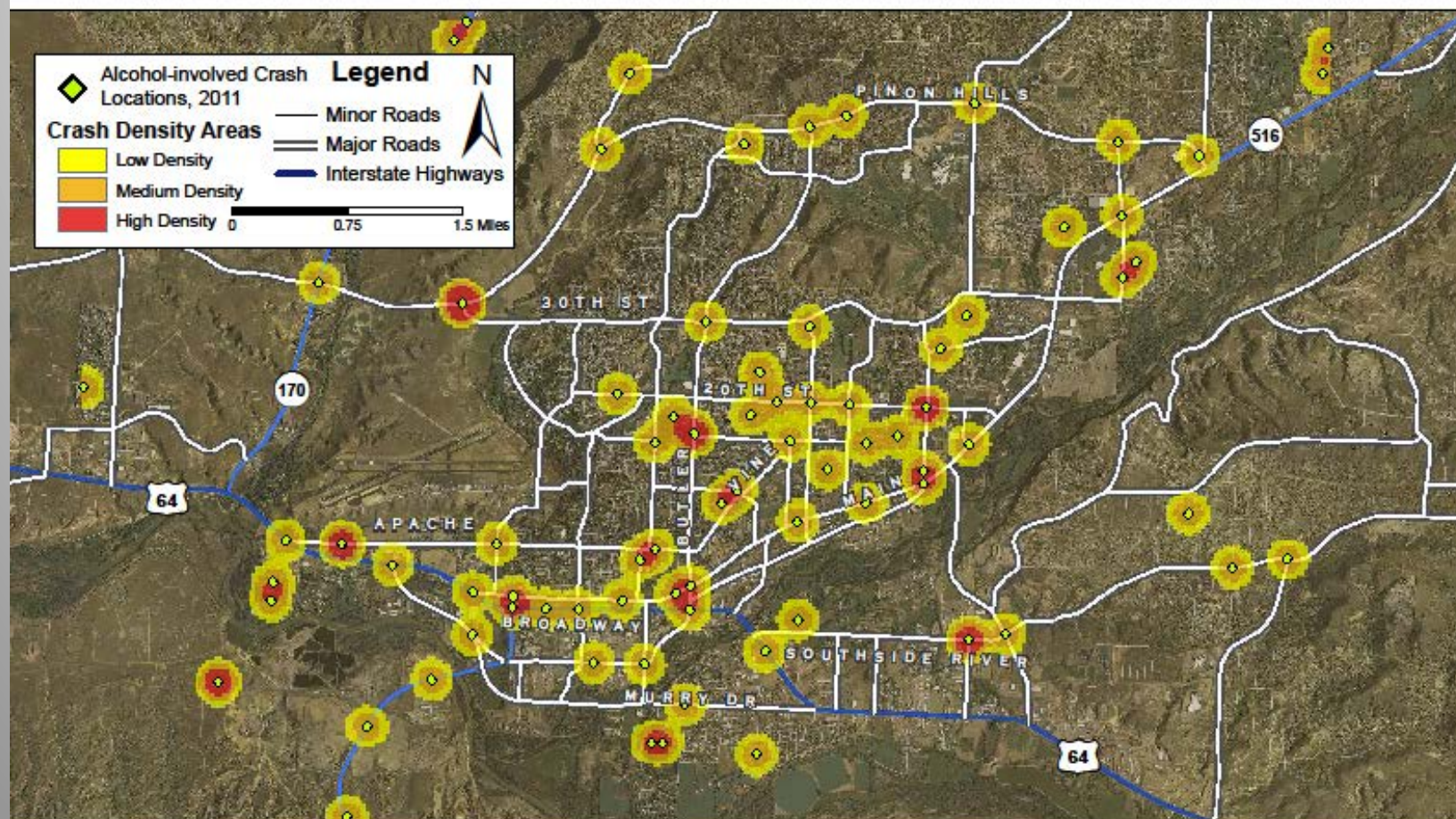


ALCOHOL OUTLET DENSITY

FARMINGTON, NEW MEXICO

A COMMUNITY PICTURE

Density Map of Alcohol-involved Crashes in Farmington, 2011

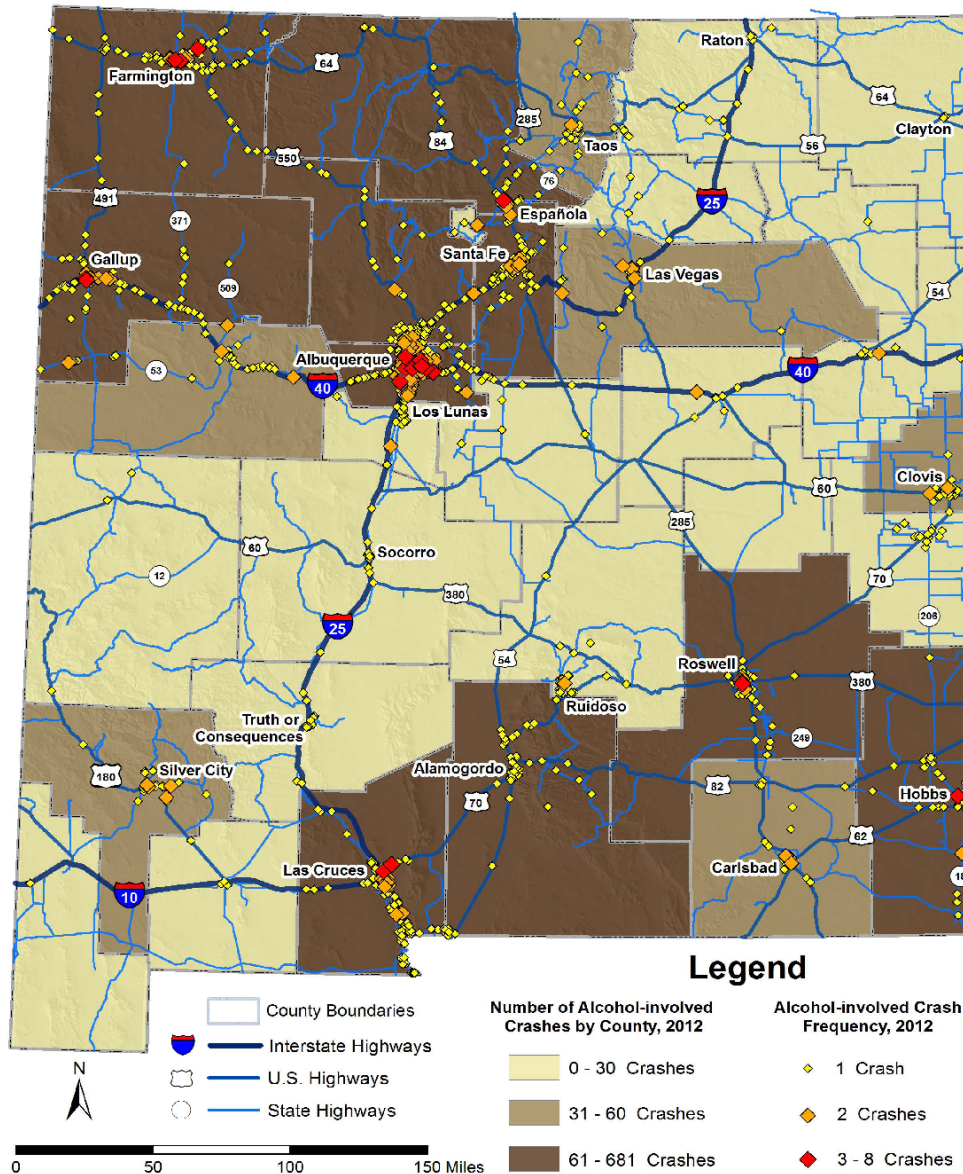


Prepared for the New Mexico Department of Transportation, Planning and Traffic Safety Divisions
Under Contract #C05579 by the University of New Mexico
Geospatial and Population Studies Traffic Research Unit (TRU)
tru.unm.edu July, 2013 tru@unm.edu



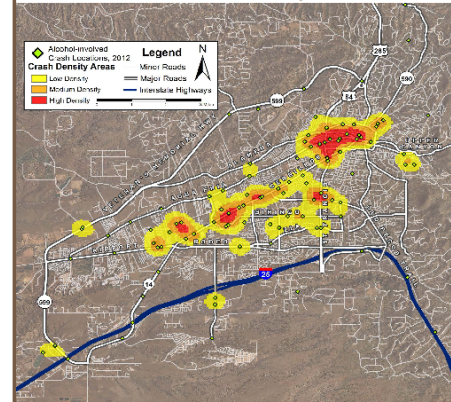
Alcohol-involved Crashes by County and Rank, 2012		
Rank	County Name	Number of Crashes
1	Bernalillo	642
2	San Juan	199
3	Doña Ana	187
4	Santa Fe	172
5	McKinley	152
6	Sandoval	113
7	Chaves	93
8	Lea	72
9	Otero	71
10	Rio Arriba	64
11	Eddy	49
12	Taos	46
13	Cibola	40
14	San Miguel	39
15	Curry	37
15	Grant	37
17	Lincoln	30
18	Valencia	23
19	Socorro	18
19	Roosevelt	18
21	Colfax	17
22	Sierra	12
23	Quay	9
24	Guadalupe	8
25	Torrance	6
26	Luna	5
27	Mora	4
27	Catron	4
29	Union	3
30	Los Alamos	2
30	Harding	2
30	Hidalgo	2
33	De Baca	0
Total Alcohol-involved Crashes in New Mexico, 2012		2,176

2012 New Mexico Alcohol-involved Crashes



In 2012 the New Mexico Department of Transportation reported 2,176 alcohol-involved crashes. The state map on the left shows the known alcohol-involved crash locations¹. The points are scaled and colored by the number of alcohol-involved crashes that occurred at that single location. The brown shading indicates the number of alcohol-involved crashes by county in New Mexico.

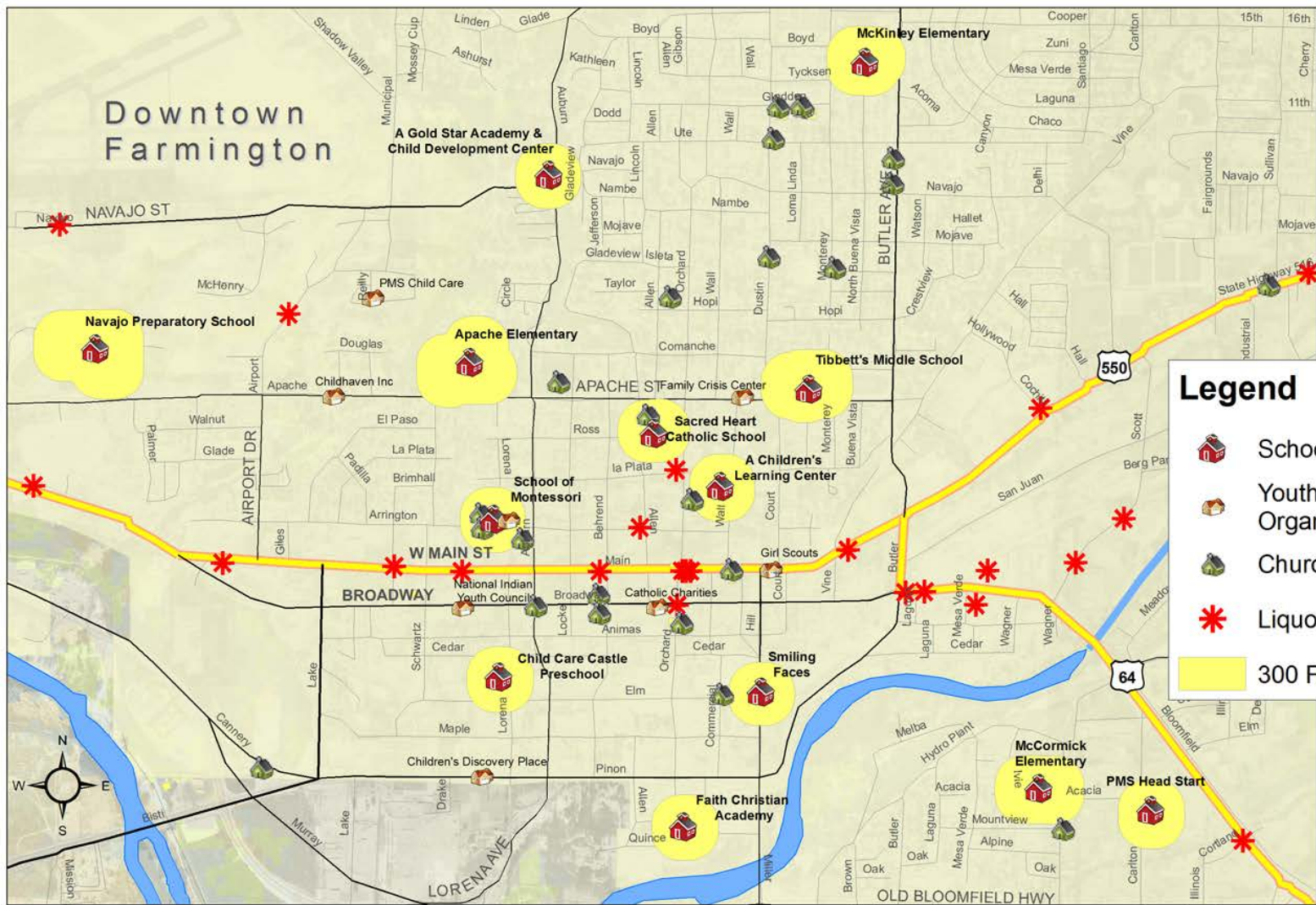
Location and Density of Alcohol-involved Crashes in Santa Fe, 2012



This is a density map of alcohol-involved crashes in the Santa Fe area.

Density maps look at the frequency and distribution of where crashes occur. The shapes identify the location of hot spots for alcohol-involved crashes. The red areas indicate where a high number of alcohol-involved crashes took place.

Maps like this are useful to law enforcement agencies for locating and directing their efforts to prevent future alcohol-involved crashes.



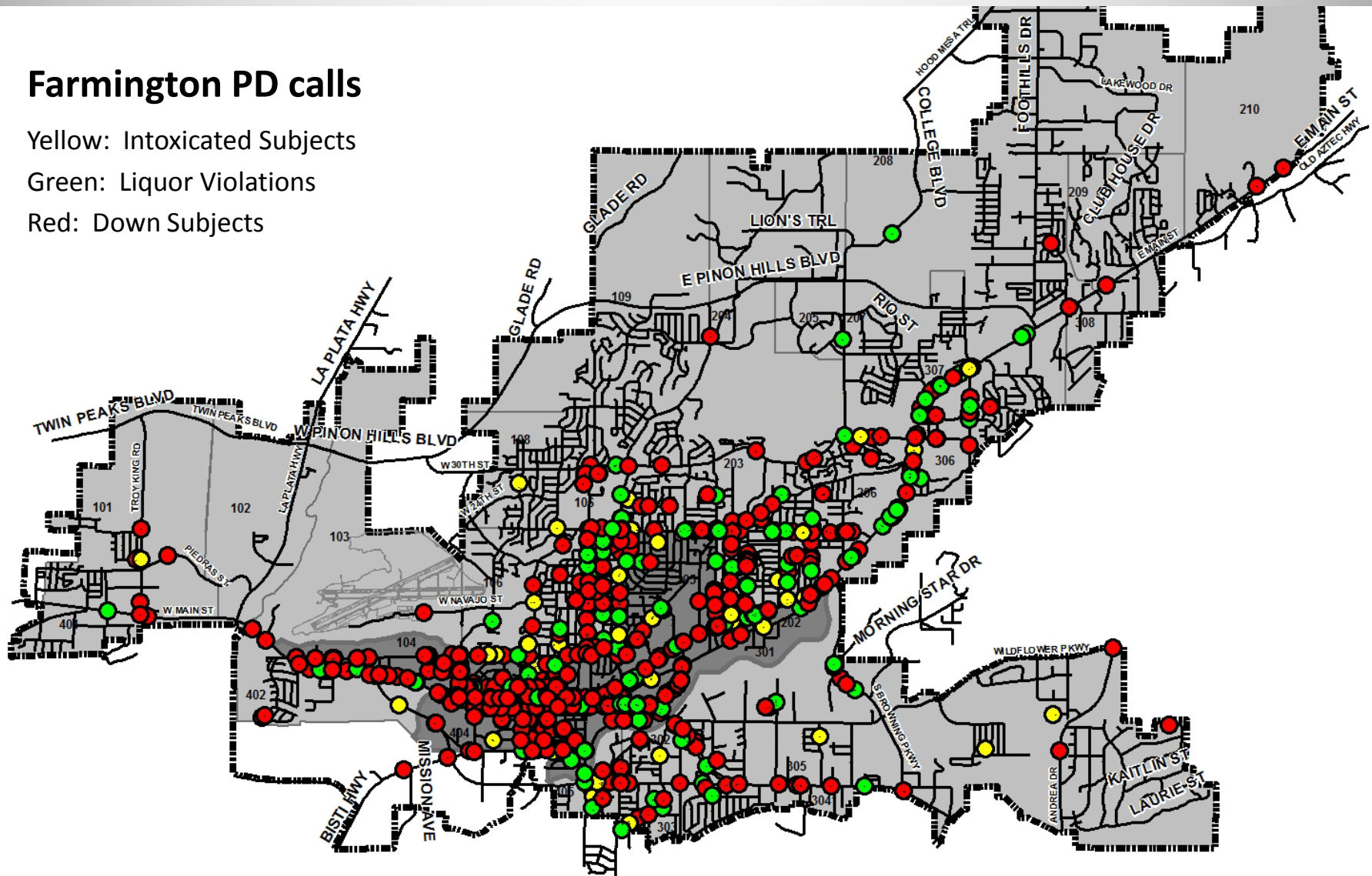
While every effort was made to ensure accuracy, this map is not intended to be an official map for zoning or enforcement purposes.

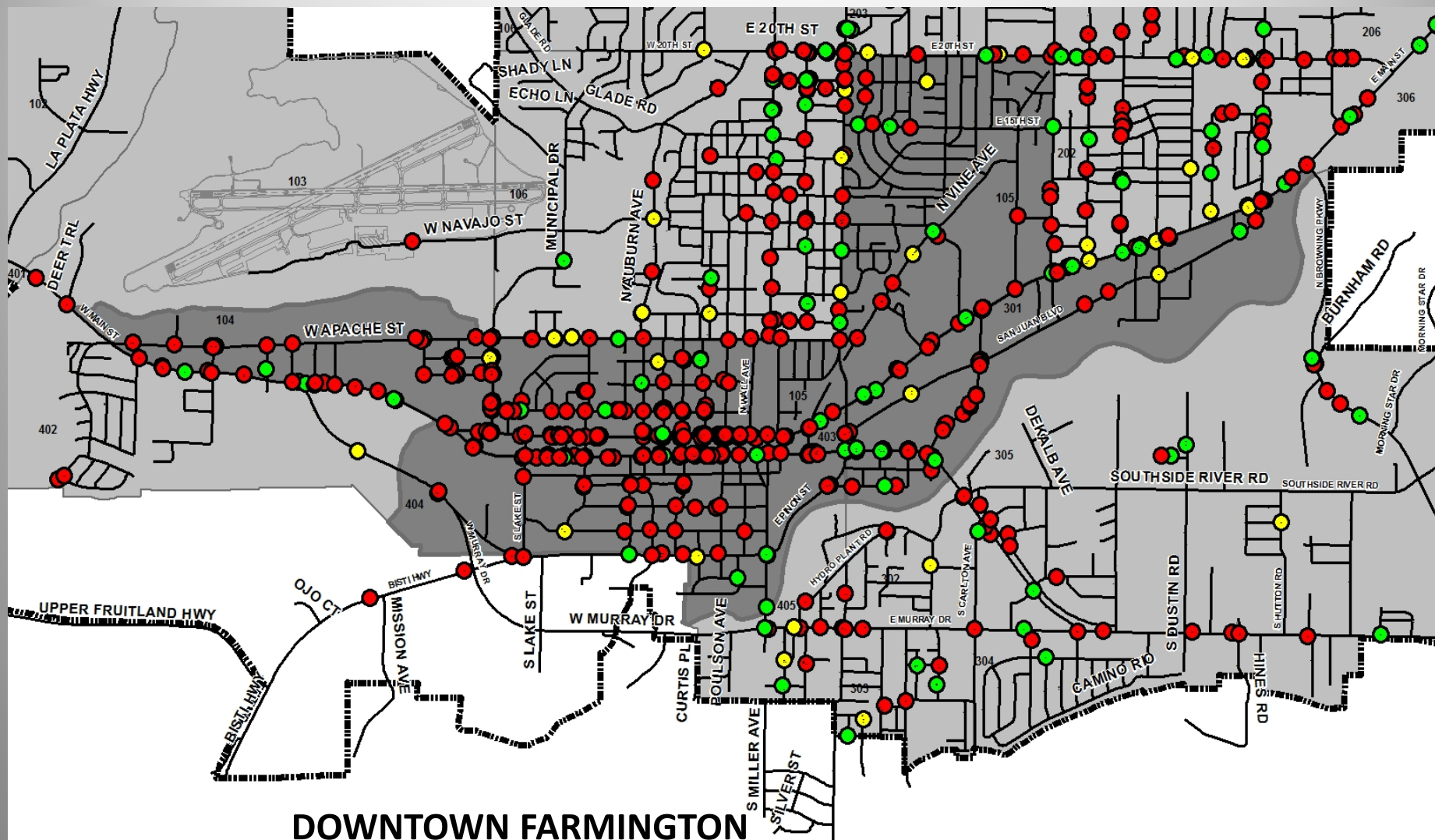
Farmington PD calls

Yellow: Intoxicated Subjects

Green: Liquor Violations

Red: Down Subjects







COMMUNITY STRATEGIES

- Limit access to alcohol
 - Number of outlets
 - Education of retail merchants: written service policies
 - Alcohol placement in retail outlets
 - Compliance checks

PRESENTED BY SAN JUAN COUNTY PARTNERSHIP

3535 E. 30th St., Ste. 239
Farmington, NM 87402
505-5867/office@sjcpartnership.org
Website: sjcpartnership.org